

CLIENT: US Surgical / Covidien

DATE: Completion 2008

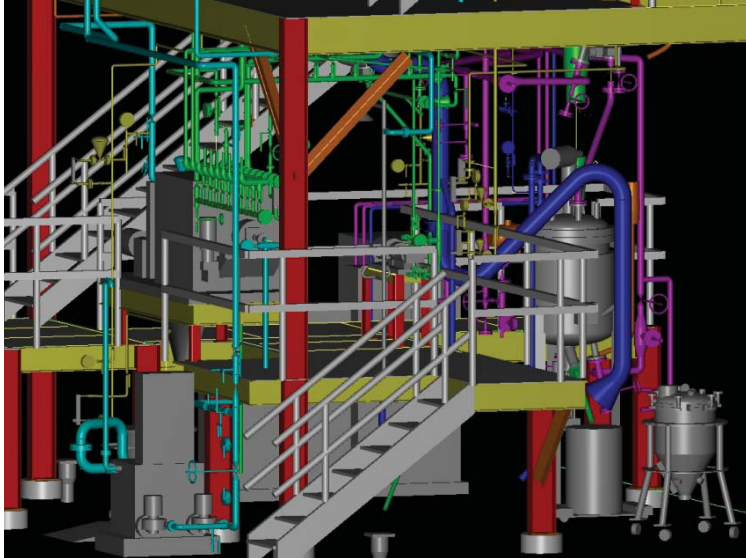


LOCATION: North Haven, CT

SCOPE OF WORK: \$10MM Restricted Space, Fast Track Retrofit

PROJECT: Purification / Distillation Process

PROJECT DESCRIPTION:



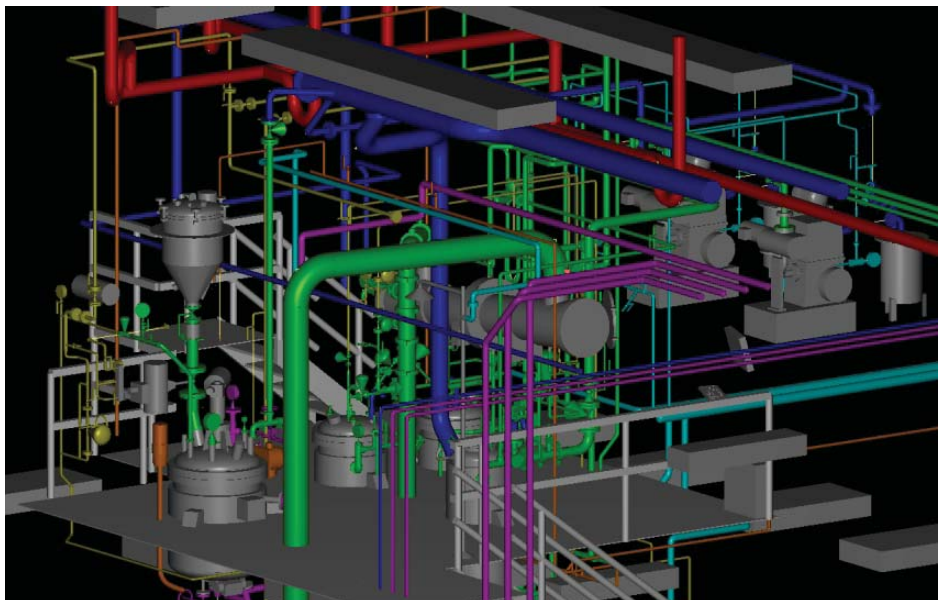
The project was driven by a need for increased capacity to meet marketing forecasts, a desire to streamline an existing process and improve overall product quality. The entire process had to fit into a rather small area of the existing facility that would be surrounded by a 24/7, Clean Class 100K, production area. Using a 3D Intelligent Design package, **IDEA** developed numerous equipment arrangement options before settling on the final choice with Covidien. Area isolation was achieved during construction by floor to ceiling barriers and the creation of a new means of egress. These two items were critical to the ultimate success of the project which was completed on time and within budget.

IDEA's Scope of Work

- ◆ Engineering, Design & Validation Services from Conceptual Development thru OQ
- ◆ Procurement Services
- ◆ Project Management Services
- ◆ Complete 3D (mechanical) Design
- ◆ Protocol Preparation & Execution
- ◆ Commissioning & Start-up
- ◆ Construction Assistance

Project Features

- ◆ Powder / Solids Handling (sanitary transfer vessels, monorails, custom docking stations, both a "clean & cleanable" design)
- ◆ Utility Upgrades (chilled water, tempered glycol systems)
- ◆ Construction in and around an FDA regulated operating area
- ◆ cGMP Design / Validated Process
- ◆ Semi-automated Process using AB PLC's & SCADA System



Innovative Design Engineering Associates, Inc.

IDEA Engineering • Merritt Corporate Woods • 612 Wheelers Farms Road • Milford, CT 06461 • 203.951.4100

www.ideas4eng.com